

HI-JACKER HYDRAULIC JACK



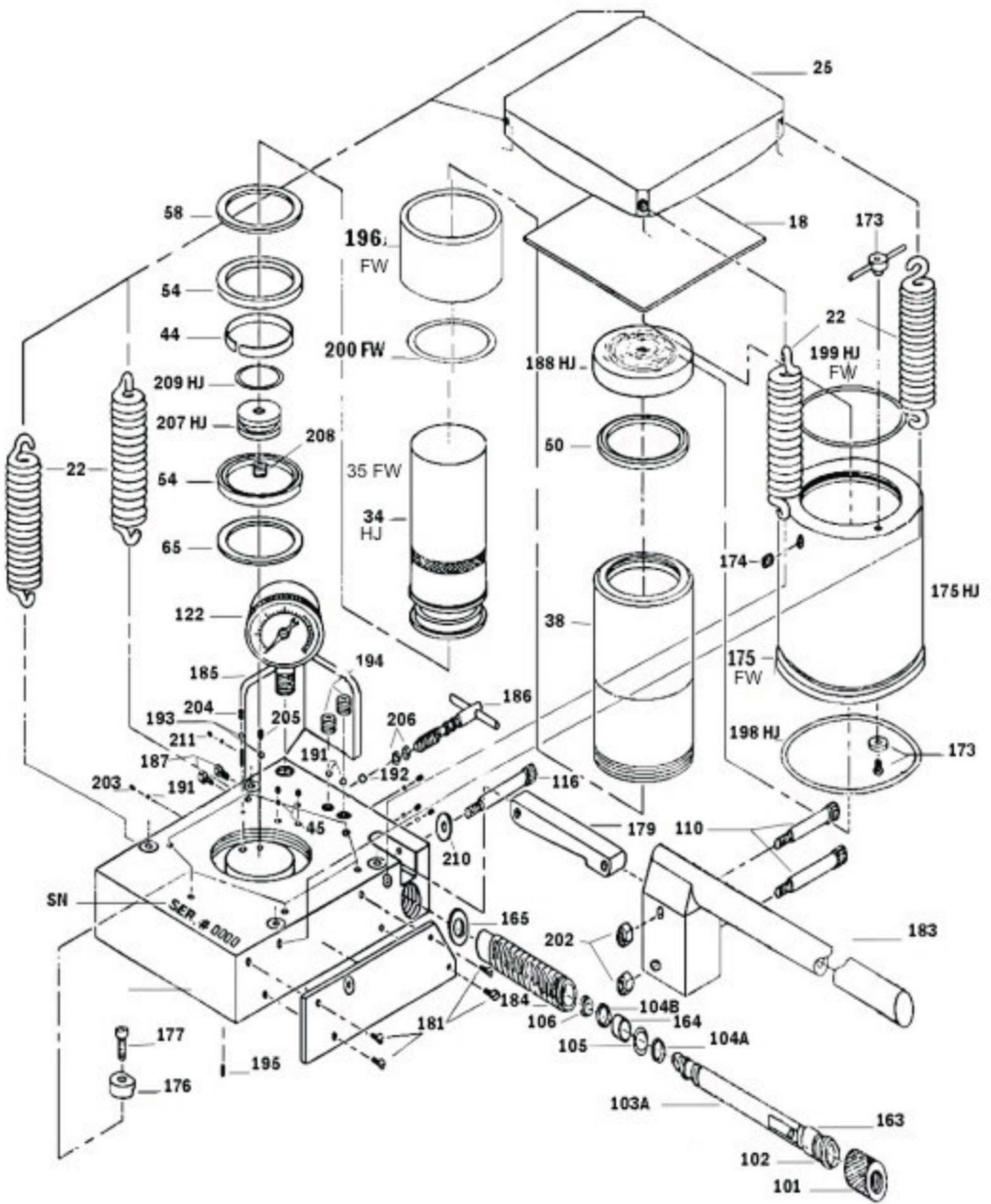
Setup and Instructions

HI-JACKER HYDRAULIC JACK

HI - JACKER

1. Maximum recommended PSI - 12,500 (45 Tons)
2. Open the valve. Pump 5 to 10 full strokes.
This will bleed the air out of the pump.
3. Open the vent on top of the reservoir by turning it all the way to the right.
The vent closes when turned 1/8 of a turn or more to the left.
4. Close the valve.
5. The maximum reading on the gauge is 15,000 PSI.
Caution: Going over 15,000 PSI will ruin the gauge.
6. This jack is equipped with a velocity check valve.
If the UP-DOWN valve is opened too fast, the velocity check valve will close, stopping the jack from coming down.
If this should happen, close the UP-DOWN valve and pump the handle one short stroke, this will unseat the velocity valve.
Open the UP - DOWN valve slowly, the jack will come down.
7. There is a **red line** on the piston.
STOP when you see the **top** of the red line.
When you see the **bottom** of the red line you **have gone too far**.
(Over jacked the jack.)
8. If you blow the gauge, the velocity valve will close.
The jack will not lift any further.
Remove the gauge guard, knock the top off the gauge with a hammer.
Remove the bottom with a $\frac{9}{16}$ " wrench, insert a $\frac{1}{4}$ " pipe plug.
The jack will now operate again.

Replace gauge as soon as possible.



FEATHER WEIGHT HI-JACKER HYDRAULIC PUMP

PUMP BODY ASSEMBLY AND PARTS BREAKDOWN

Hi-Jacker/Feather Weight Parts List

<u>Part #</u>	<u>Need</u>	<u>Description</u>	<u>Part #</u>	<u>Need</u>	<u>Description</u>
SN		Serial Number Location	173 FWHJ	1	Air Vent Valve
10LFHJ	1	Ram Repair Kit	174 FWHJ	1	Filler Plug
18TSHJ	1	Nylon Square - 6"	175 FW	1	Reservoir - 4 1/2"
19 LFFW	1	Nylon Square - 4 1/4 "	175 HJ	1	Reservoir - 5 1/2"
22 TSHJ	4	Retractor Spring - 6 1/2"	176 FWHJ	6	Reservoir Holding Tab
23 LFFW	4	Retractor Spring - 5 1/4"	177 FWHJ	6	Allen Cap Screw
25 TSHJ	1	Top Plate - 6 5/8"	178 FW	1	Base - 6 3/4"
26 LFFW	1	Top Plate - 5 1/4"	178 HJ	1	Base - 7 1/2"
34 HJ	1	Piston - 3"	179 FWHJ	1	Pump Link
35 FW	1	Piston - 2 3/8"	180 FW	1	Safety Plate - 5 1/4"
38 HJ	1	Cylinder - 3"	180 HJ	1	Safety Plate - 5 3/4"
39 FW	1	Cylinder - 2 3/8"	183 FWHJ	1	Single Speed Pump Handle
43 LFHJ	1	Nylon Guide - Cylinder	184 FWHJ	1	Pump Sleeve
44 LFHJ	1	Nylon Guide - Piston	185 FWHJ	1	Gauge Guard
45 FW	1	Nylon Guide - Cylinder	186 FWHJ	1	Shut Off Valve Control
46 FW	1	Nylon Guide - Piston	187 FWHJ	3	Gauge Guard Mount Bolt
50 LFHJ	1	Top Wiper Seal	188 FW	1	Piston Cap - 2 3/8"
51 FW	1	Top Wiper Seal	188 HJ	1	Piston Cap - 3"
54 LFHJ	1	Poly Pack - Piston Seal	191 FWHJ	6	Ball
55 FW	1	Poly Pack - Main Seal	192 FWHJ	1	Shut Off Ball
56TMFW	1	Base Seal	193 FWHJ	4	Velocity Ball, Pump Balls
58 LFHJ	1	Piston Safety Seal & Quad Ring	194 FWHJ	2	Set Screw
59 FW	1	Piston Safety Seal	195 FWHJ	1	Set Screw
65 LFHJ	1	Base Safety Seal	196 FW	1	Cylinder Support Sleeve
66 FW	1	Base Safety Seal	198 FW	1	Reservoir Seal - Bottom
101	1	Pump Packing Nut	198 HJ	1	Reservoir Seal - Bottom
102	1	Plunger Wiper Seal	199 FW	1	Reservoir Seal - Top
103 A	1	Pump Plunger	199 HJ	1	Reservoir Seal - Top
104 A	1	Nylon Packing Ring - Plunger	200 FW	1	O - Ring Cylinder Seal
104B	1	Nylon Safety Seal Ring - Plunger	201 FWHJ	1	Shoulder Strap
105	1	Neoprene O-Ring	202 FWHJ	2	Nut
106	1	Plunger Seal - Poly Pack	203 FWHJ	6	Set Screw
110	1	Shoulder Bolt	204 FWHJ	1	Velocity Valve Set Screw
116	2	Shoulder Bolt	205 FWHJ	1	Set Screw
122	1	Pressure Gauge	206 FWHJ	2	O - Ring Shut Off Valve
163	1	Top Nylon Guide - Plunger	207 FW	1	Piston Plug - 1 1/4 "
164	1	Bottom Nylon Guide - Plunger	207 HJ	1	Piston Plug - 2 1/16"
165	1	Nylon Sleeve Seal	208 FWHJ	1	Pipe Plug