



2023 INDUSTRIAL MACHINERY SALES CATALOG

baileysonline.com | (888) 465-8227 | industrial@baileysonline.com





MORBARK® 12" Brush Chippers

We have a large selection of Morbark 12" chippers available right now! Morbark 12" brush chippers are ideal for residential tree services, utility line clearing crews, and municipality work. They are compact and powerful, easy to tow, and simple to operate and maintain. Morbark builds these chippers with a variety of engine options, in both traditional tow behind and track versions. These chippers are also available with several bolt-on options such as folding infeeds and hydraulic winches.

2022 Morbark 1215 Brush Chipper



12" Eger Beaver Drum Chipper • Engine: 48HP Isuzu T4F Diesel (No DEF) • Chipper Infeed Size: 12" Tall x 15" Wide with 2 Knife Drum • Gross Weight (GVWR) 5,200 lbs • Centrifugal Clutch • Single Feed Wheel • Hydraulic Lift • Hours: 160

MOR EB1215 32665

Call an Expert at (888) 465-8227

2023 Morbark 1415T Brush Chipper



12" Eger Beaver Drum Chipper • Engine 74HP T4F Cat Diesel (No DEF) • Chipper Infeed Size: 14" Tall x 15" Wide with 2 Knife Drum • Dual Feed Wheels • Cat 303.5 Rubber Track Undercarriage • Radio Remote Control • Gross Weight 7,800 lbs • Hours: New

MOR EB1415T 73474

Call an Expert at (888) 465-8227

2022 Morbark 1215 Brush Chipper



12" Eger Beaver Drum Chipper • Engine: 75HP PSI Gas • Chipper Infeed Size: 12" Tall x 15" Wide with 2 Knife Drum • Gross Weight (GVWR) 5,200 lbs • Centrifugal Clutch • Single Feed Wheel • Hours: New

MOR EB1215 32662

Call an Expert at (888) 465-8227

2022 Morbark 1415 Brush Chipper



12" Eger Beaver Drum Chipper • GM- V6 Vortec 145HP Gas • Chipper Infeed Size: 14" Tall x 15" Wide - 2 Knife Drum • Gross Weight (GVWR) 5,800 lbs • Dual Feed Wheels • Hydraulic Lift • Hours: New

MOR EB1415

Call an Expert at (888) 465-8227

2022 Morbark 1415 Brush Chipper



12" Eger Beaver Drum Chipper • 70HP Isuzu Diesel • Chipper Infeed Size: 14" Tall x 15" Wide - 2 Knife Drum • Gross Weight (GVWR): 5,800 lbs • Dual Feed Wheels • Hydraulic Lift • Hours: New

MOR EB1415

Call an Expert at (888) 465-8227

2023 Boxer 700HDX Compact Utility Loader



700 Series Mini Skid Steer • Engine: 25HP Kubota T4F Diesel (No DEF) • Expandable Undercarriage (35" to 43.5") • Operating Capacity 700 lbs • Tip Capacity 2,000 lbs • Hydraulic Flow 27 GPM • Max Speed: 4.5MPH • Gross Weight: 2,880 lbs • Hours: New

BXE 700HDX 0710623

Call an Expert at (888) 465-8227



MORBARK® 15", 18" & 20" Brush Chippers

Morbark 15", 18" & 20" brush chippers are ideal for commercial tree service work, utility line clearing crews, maintenance contractors, and municipality work. They are designed for high capacity, high production chipping, are easily towable, and simple to operate and maintain. Morbark builds these chippers in both single and double feed wheel designs with a variety of engine options, as well as track versions. These chippers are also available with several popular options such as foldable infeeds and hydraulic winches.

2023 Morbark 1621X Brush Chipper



15" Eger Beaver Drum Chipper • Engine: John Deere 140HP Diesel T4F • Infeed Opening: 16" Tall x 21" Wide with 4 Knife drum • Gross Weight (GVWR): 10,000 lbs • Dual Infeed Wheels • Hydraulic Winch • Hours: New

MOR 1621X

Call an Expert at (888) 465-8227

2023 Morbark 1922 Brush Chipper



18" Eger Beaver Drum Chipper • Engine: Cat C4.4 174HP Diesel T4F • Infeed Opening: 19" Tall x 22" Wide with 4 Knife drum • Gross Weight (GVWR): 10,500 lbs • Dual Infeed Wheels • Hydraulic Winch • Hours: New

MOR EB1922

Call an Expert at (888) 465-8227

2023 Morbark 1821 Brush Chipper



15" Eger Beaver Drum Chipper • Engine: Cat C4.4 174HP Diesel T4F • Infeed Opening: 18" Tall x 21" Wide with 4 Knife drum • Gross Weight (GVWR): 10,500 lbs • Dual Infeed Wheels • Hydraulic Winch • Hours: New

MOR EB1821

Call an Expert at (888) 465-8227

2023 Morbark M20R Brush Chipper

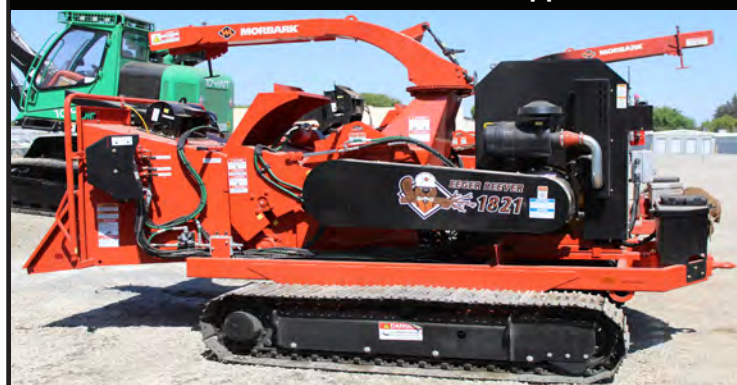


20" Eger Beaver Track Drum Chipper • Cat 312B Steel Track Undercarriage • Engine: Cat C9.3B 415HP Diesel T4F • Infeed Opening: 20" Tall x 28" Wide with 6 Knife Drum • Gross Weight: 26,500 lbs • PT Tech Hydraulic Clutch • Hydraulic Winch • Hours: New

MOR M20RT

Call an Expert at (888) 465-8227

2023 Morbark 1821 Track Chipper



15" Eger Beaver Drum Chipper • Cat 305 Steel Track Undercarriage • Engine: Cat C4.4 174HP T4F Diesel • Infeed Size: 18" Tall x 21" Wide with 4 Knife Drum • Gross Weight: 13,100 lbs • Dual Feed Wheels • Hydraulic Rotation Chip Chute • 5000 lb Hyd Winch • Hours: New

MOR EB1821 26263

Call an Expert at (888) 465-8227

2023 Morbark 2131 Track Chipper



18" Eger Beaver Drum Chipper • Cat 305 Steel Track Undercarriage • Engine: Cat C7.1 275 hp T4F Diesel • Infeed Size: 21 Tall x 31" Wide with 4 Knife Drum • Gross Weight: 18,500 lbs • Dual Feed Wheels • Hydraulic Rotation Chip Chute • 5000 lb Hyd Winch • Hours: New

MOR 2131 T 52832

Call an Expert at (888) 465-8227

WoodlandPRO Chipper Knives

WOODLANDPRO®

WoodlandPRO chipper knives are an economic replacement option for your brush chipper. WoodlandPro chipper knives are made from imported A8 modified knife steel. They're dual tempered, which makes them hard enough to hold an edge yet tough enough to take a pounding. Each knife is hardened and machined to OEM specifications. Because of volatile steel costs, pricing is subject to change without notice. **NOTE: You will find hundreds more listed on our website.**



CHIPPER KNIVES FOR BANDIT CHIPPERS

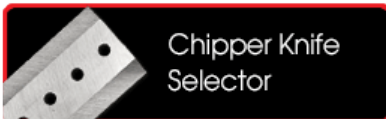
Item #	Knife Size	Replaces OEM #	Fits
WPCK 9009902200	7.2" x 4" x 1/2"	900-9902-00	Bandit 100-250XP (1/2" Holes)
WPCK 900990118	7.2" x 4-1/2" x 1/2"	900-9901-18	Bandit 100-250XP (5/8" Holes)
WPCK 912300127	9" x 5-1/2" x 5/8"	912-3001-27	Bandit 990XP, 1390XP, 1490XP, 12XP, 15XP
WPCK 900990227	10" x 5-1/2" x 5/8"	900-9902-27	Bandit 1590XP, 1890XP, 18XP, 19XP

CHIPPER KNIVES FOR MORBARK CHIPPERS

Item #	Knife Size	Replaces OEM #	Fits
WPCK 39233692	10-1/2" x 5" x 1/2"	39233-692	Model 12R, 12RX, 13, 17, 2070
WPCK 39233692	10-1/2" x 5" x 5/8"	39233-813	Model 15R, 15RX, 18R, 18RX, 20R
WPCK 39233818	11" x 7.3" x 3/4"	39233-818	20R, 20/36, 30/36, 40/36 Babbitt

CHIPPER KNIVES FOR VERMEER CHIPPERS

Item #	Knife Size	Replaces OEM #	Fits
WPCK 153175001	9" x 4-1/2" x 5/8"	153175001	BC 1000, 1000XL, 1200XL
WPCK 79511001	8" x 3-1/2" x 3/8"	79511001	BC 1220, 1230, 1250
WPCK 156811001	8" x 5" x 5/8"	156811001	BC 1400, 1400XL, 1500
WPCK 154390001	10" x 5-1/2" x 5/8"	154390001	BC 1800, 2000
WPCK 1577697001	10" x 5" x 5/8"	1577697001	BC 1800XL, 2000XL, AX19



Don't See Your Chipper Knife Here? No Problem.



Bailey's Industry Leading Chipper Knife Selector is a comprehensive tool put together by our experts so you can FIND THE EXACT CHIPPER KNIFE you need FAST and EASY. Look for the Chipper Knife Selector on our homepage or visit baileysonline.com/chipper to get started.

Bailey's®

Professional Chipper Knife Sharpening Service

Get your chipper knives professionally sharpened at Bailey's. Dull chipper knives can be extremely hard on a chipper's performance, and can lead to premature failures. Keep your chipper running smoothly with professionally sharpened chipper knives. We sharpen each knife to OEM specifications in a quick and professional manner. Call 1-800-322-4539 for more information.

Item # 46540

This knife charge is per grinding inch for each edge of the chipper knife. (Example: a 7-1/2" double edge knife would have a total of 15 inches).



ATTENTION! READ THIS — WARNING: This product can expose you to chemicals including Nickel and Chromium, which are known to the State of California to cause cancer and birth defects or other reproductive harm. For more information go to www.P65Warnings.ca.gov



Rayco RG37T Trac Jr Self Propelled Stump Cutter

The Rayco RG37T is an excellent stump cutter for those who need a compact machine that has traction to get where tires just won't take you. The rubber track undercarriage provides excellent traction while maintaining a low ground pressure. Unlike other track stump cutters, the Trac Jr's short track base allows it to turn easily and with less turf damage than competitors long track bases. Counter-rotating tracks allow the machine to turn in place, which makes it easy to re-position when cutting large stumps. A swing-out control station provides excellent visibility while cutting and swings in line for travel through gates. Two-speed travel and a hydraulic backfill blade rounds out the package makes the Trac Jr an excellent choice among compact stump cutters.

37 HP Vanguard Gas Engine • Cutter Width: 51" • Cutting Depth 12" • Cutting Height 24" • 18 Rayco Super Tooth System • Weight: 1,830 lbs • Hours: New

Rayco C275R Forestry Mulcher

The C275 is a mid-sized forestry mulcher that delivers 275 hp (205 kW) in a compact, low ground pressure package. This mulching machine is suited for clearing small trees, underbrush, and a variety of unwanted vegetation across a wide range of environments. The heavy-duty steel undercarriage and powerful final drives allow operators to tackle difficult terrain with confidence. Rayco's exclusive elevated cooling design keeps engine and hydraulic temperatures within their limits in the harshest of environments. To minimize maintenance, a reversing fan can be activated from the cab to clear the limbriser debris screens. This helps to extend service intervals even when operating in hot, debris-filled environments. When manual cleaning of the debris screens is necessary, they are easily removable and the rear door opens to allow unrestricted access to the debris screen and engine radiator.



275 HP Cat Diesel T4F Engine • Weight: 23,165 lbs • Cutter Width: 77.5" • Predator Mulcher Head FM275-7DR • Drive Belt: Gates Polchain GT • Rotor Speed: 2050 RPM Travel Speed (High/Low): 3.6 mph / 1.8 mph • Hours: 57

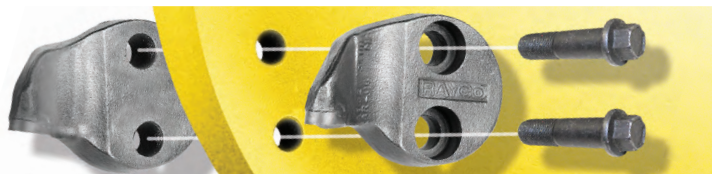


RAYCO Teeth Work on Virtually Every Stump Grinder Made!



RAYCO Stump Cutter Teeth

Upgrade your old two piece stump cutter teeth to Rayco's Super Tooth. The patented single-piece design tooth is made out of high-alloy steel and offers superior tooth support with less twisting, bending, and breaking. Rayco's Super Tooth has a large mounting surface which virtually eliminates gouged cutter wheels, elongated bolt holes, and all around cutter wheel wear associated with other cutters. Not only will you get greater service life out of your grinder, you'll see a definite increase in your grinder's performance. There are 6 different types to match almost every manufacturer's make and model.



Threaded Tooth Cutter Wheel Counter-Bored Tooth Bolts



RAYCO SINGLE PIECE DESIGN ADVANTAGES

- Faster Grinding Speeds
- Cost Effectiveness
- Less Downtime
- Increased Service Life
- Reduced Bending & Breaking
- Enhanced Performance
- 400% More Mounting Surface
- Greater Strike Clearance

Item #	Description
RST 2933C	Angled Super Tooth Counter Bored
RST 2933T	Angled Super Tooth Threaded
RST 3144C	Straight Super Tooth Counter Bored
RST 3144T	Straight Super Tooth Threaded
RST 20432C	Reverse Super Tooth Counter Bored
RST 20432T	Reverse Super Tooth Threaded

Stump Cutter Bolts

Top quality grade 8 allen head cap screws are designed to fit most stump cutter teeth, including the Rayco Super Tooth. Bolts have allen head caps and are measured from the bottom of the cap to the threaded end. Simply measure your wheel thickness to match up the bolt for your machine. The sizes listed below are for most stump cutter teeth including the Rayco Super Tooth.

Item #	Description
ACS 5818 150	1-1/2" Bolt for 3/8" Wheel (RBT 750949)
ACS 5818 175	1-3/4" Bolt for 1/2" Wheel (RBT 718009)
ACS 5818 200	2" Bolt for 3/4" Wheel (RBT 718013)
ACS 5818 218	2-1/8" Bolt for 1" Wheel (RBT 718010)
ACS 5818 225	2-1/4" Bolt for 1-1/4" Wheel
ACS 5818 250	2-1/2" Bolt
ACS 5818 275	2-3/4" Bolt for 1-1/2" Wheel (RBT 718014)



Tractors & UTV's

Bailey's is proud to offer the Kioti Tractor line of tractors and utility vehicles. Kioti (pronounced Coyote) has a full line of dirt-digging, hay-hauling, trail-blazing machines ready to take on any job that demands a durable compact tractor. Bailey's has a wide variety of tractors in the 22hp to 110hp range, as well as utility vehicles at our Woodland, CA facility.

Kioti CK2620 Hydrostatic 24.5 HP Tractor



Daedong 24.5 HP Diesel Engine • Dual Pedal Hydrostatic 4-Wheel Drive • Power Steering • 3 Range Transmission with 10 MPH Maximum Speed • PTO Power: 21.5HP • Category 1 Three Point Hitch Capacity: 1,600 lbs • Hydraulic Flow: 11.7 GPM • Loader Lift Capacity: 1,800 lbs • Weight With Loader: 2,800 lbs

KOT CK2620HST

Call an Expert at (530) 204-7730

Kioti CK3520 Hydrostatic 35 HP Tractor



Daedong 35HP Diesel Engine • Dual Pedal Hydrostatic 4-Wheel Drive • Power Steering • 3 Range Transmission with 15 MPH Maximum Speed • PTO Power: 31HP • Category 1 Three Point Hitch Capacity: 1,600 lbs • Hydraulic Flow: 11.7 GPM • Loader Lift Capacity: 1,800 lbs • Weight With Loader: 3,800 lbs

KOT CK3520HST

Call an Expert at (530) 204-7730

Kioti DK4720SE Hydrostatic 44.9 HP Tractor



Daedong 44.9 HP Diesel Engine • Dual Pedal Hydrostatic 4-Wheel Drive • Power Steering • 3 Range Transmission with 18.5 MPH Maximum Speed • PTO Power: 33.5 HP • Category 1 Three Point Hitch Capacity: 2,700 lbs • Hydraulic Flow: 16.5 GPM • Loader Lift Capacity: 2,500 lbs • Weight With Ag Tires: 3,500 lbs

KOT DK4720SEHST

Call an Expert at (530) 204-7730

Kioti DK5320SE Hydrostatic 50.3 HP Tractor



Daedong 50.3 HP Diesel Engine • Dual Pedal Hydrostatic 4-Wheel Drive • Power Steering • 3 Range Transmission with 18.5 MPH Maximum Speed • PTO Power: 39.3 HP • Category 1 Three Point Hitch Capacity: 2,700 lbs • Hydraulic Flow: 16.4 GPM • Loader Lift Capacity: 2,500 lbs • Weight With Ag Tires: 3,500 lbs

KOT DK5320SEHST

Call an Expert at (530) 204-7730

Kioti CX2510 Hydrostatic 24.5 HP Tractor



Daedong 24.5 HP Diesel Engine • Dual Pedal Hydrostatic 4-Wheel Drive • Power Steering • 3 Range Transmission with 10 MPH Maximum Speed • PTO Power: 21.5HP • Category 1 Three Point Hitch Capacity: 1,600 lbs • Hydraulic Flow: 11.7 GPM • Loader Lift Capacity: 1,800 lbs • Weight With Loader: 2,800 lbs

KOT CX2510HST

Call an Expert at (530) 204-7730

Kioti K9 2400 24 HP UTV



Daedong 24 HP Diesel Engine • 2 Speed 4-Wheel Drive • 31 MPH Maximum Speed • Power Steering • Payload Capacity: 1,750 lbs • Bed Capacity: 1100 lbs • Towing Capacity: 1,300 lbs • 4 Wheel Disc Brakes • Independent Wishbone Suspension • 12" Ground Clearance • Weight: 2,300 lbs

KOT K9 2400G

Call an Expert at (530) 204-7730

Tractor Implements & Attachments

Kioti Rear Blade

Kioti rear blades are an economic tractor attachment for basic pushing and grading duties. We stock these rear blades in several different sizes, but our 72" is the most common. Come complete with a replaceable cutting edge. 72" blade fits all tractors up to 45 hp with a Category 1 hitch. See our website for complete details.

Item #	Description
KOT RB2560	Kioti 60" Rear Blade
KOT RB2572	Kioti 72" Rear Blade
KOT RB2584	Kioti 84" Rear Blade

Kioti Box Scrapers

Kioti box scrapers are a common attachment for ranch and farm duties. We stock these box scrapers in several different sizes. Come complete with 2 cutting edges and adjustable scarifiers. Fits all tractors up to 45 hp with a Category 1 hitch. See our website for complete details.

Item #	Description
KOT BB2254	Kioti 54" Box Scraper
KOT BB2265	Kioti 65" Box Scraper
KOT BB2272	Kioti 72" Box Scraper

Kioti Tiller

Kioti tillers make quick work of large landscaping and gardening projects. We stock tiller attachments in a few different sizes, but the 60" is most popular. These forward rotating tillers come complete with a slip clutch to protect the driveline in case of impact with hard objects. The 60" tiller fits all tractors with 20-40 hp with a Category 1 hitch. See our website for complete details.

Item #	Description
KOT RT2560	Kioti 60" Tiller
KOT RT2572	Kioti 72" Tiller

Kioti Backhoe Attachment

Kioti backhoe attachments are popular with landscapers and gardeners. Backhoe attachments require the one time installation of a subframe and valve kit, but then are easily changed out with a quick attachment. Backhoe attachments are specific to Kioti tractor models and are available in several bucket sizes. See our website for complete details.

Item #	Description
KOT KB24765	Kioti Backhoe Attachment (CX Models)
KOT KB2475L	Kioti Backhoe Attachment (CK Models)
KOT KB24784	Kioti Backhoe Attachment (DK/NS Models)

Tajfun Logging Winch Attachment

Tajfun started developing and producing logging winches in 1979, and since then they have been constantly updating, upgrading, and developing new winches and parts. They have reliable and easy hydraulic (Type AHK winches) or Mechanical Control (Type A winches) Simple and fast installation to tractors three point mounting system. Robotic welded stable and robust construction. Made of high-quality steel, laser cut and powder coated stable drive with double bearing and double reduction gear (Winches from 45 to 100 kN) Highly efficient clutch activation, even with mechanical winches - short pull, low activation power. See our website for complete details.

Item #	Description
TAF EGV 35A	Tajfun Mechanical Logging Winch (8,000 lb)
TAF EGV 45A	Tajfun Mechanical Logging Winch (10,000 lb)
TAF EGV 55AHK	Tajfun Hydraulic Logging Winch (12,000 lb)



Bailey's is proud to offer XL Specialized heavy haul trailer for the Western USA. XL Specialized Trailers is a leading manufacturer of highly engineered and customized trailers for applications in the heavy haul trucking, forestry, construction, agriculture, wind energy, and oil & gas industries. XL Specialized trailers are made in Manchester, Iowa. Bailey's stocks a wide variety of XL lowbeds to fit your heavy haul needs at our Woodland, CA warehouse facility.



XL Specialized 70 MG 8 Tire Lowbed



Capacity: 70,000 lbs • Overall Length: 45 ft. • Overall Width: 102" • Well Length Height: 22' • Loaded Deck Height: 24" • Loaded Ground Clearance: 8" • Two 15" T-1 Fully Cambered Beams • Two 25,000 lb Axles • Base Weight 14,000 lbs • One King Pin Setting • Drum Brakes

BMHH XL70MG

Call an Expert at (888) 465-8227

XL Specialized 100 MGX 16 Tire Expando



Capacity: 100,000 lbs • Overall Length: 44 ft. • Overall Width: 102" • Well Length Height: 21'6" • Loaded Deck Height: 24" • Loaded Ground Clearance: 8" • Expands to 120" • Two 16" T-1 Fully Cambered Beams • Four 25,000 lb Axles • Base Weight 15,000 lbs • Two King Pin Settings • Drum Brakes

BMHH XL100MGX

Call an Expert at (888) 465-8227

XL Specialized 100 MGX 16 Tire Expando



Capacity: 100,000 lbs • Overall Length: 44 ft. • Overall Width: 102" • Well Length Height: 21'6" • Loaded Deck Height: 24" • Loaded Ground Clearance: 8" • Expands to 120" • Two 16" T-1 Fully Cambered Beams • Four 25,000 lb Axles • Base Weight 15,000 lbs • Two King Pin Settings • Disc Brakes

BMHH XL100MGX

Call an Expert at (888) 465-8227

XL Specialized 100 MG 16 Tire Lowbed



Capacity: 100,000 lbs • Overall Length: 44 ft. • Overall Width: 120" • Well Length Height: 21'6" • Loaded Deck Height: 24" • Loaded Ground Clearance: 8" • Two 16" T-1 Fully Cambered Beams • Four 25,000 lb Axles • Base Weight 16,500 lbs • Two King Pin Settings • Drum Brakes

BMHH XL100MGX

Call an Expert at (888) 465-8227

Bailey's is proud to offer Pitts Trailers for the Western USA. Pitts is the world's largest manufacturer of forestry trailers, including log trailers, open and closed top chip vans as well as walking floor vans. Since 1976, Pitts Trailers has been synonymous with innovation, performance, value, quality and durability. The company's roots run deep in the area of truck trailer manufacturing excellence and Pitts continues to grow to meet its customers' requirements. The company utilizes decades of experience, computer aided design, skilled craftsmen and a state-of-the-art facility to produce safe and reliable trailers. Bailey's stocks a wide variety of Pitts logging trailers and chip vans at our Woodland, CA facility.

Pitts LT40-L Straight Frame Log Trailer



Weight: 8,650 lbs. • 80,000 lbs. GVWR • Air Ride Suspension • 22" Load Payin Series Main Frame • Grote Ultra Blue Sealed Wiring Harness • 4 Movable Log Bunks • Lock-N-Go Landing Gear • Vulcan Scales • Aluminum Wheels

PTT LT40UL

Call an Expert at (888) 465-8227

Pitts LT40-8L Drop Frame Log Trailer



Weight: 9,300 lbs. • 80,000 lbs. GVWR • Air Ride Suspension • 23" Load Payin Series Frame with 8" Drop Center • Grote Ultra Blue Sealed Wiring Harness • 4 Movable Log Bunks • Lock-N-Go Landing Gear • Vulcan Scales • Aluminum Wheels

PTTLT408UL

Call an Expert at (888) 465-8227

ARBORMAX Log Truck Wrappers



ARBORMAX Log truck wrappers are made with HDPE synthetic rope, instead of wire rope. Due to their lightweight design, you can expect less worker fatigue and less common injuries (e.g., rotator cuff injuries). These wrappers are also safer to handle, because the rope has no protruding wires, commonly know as fishhooks and/or jaggars. Available in several sizes and lengths.

AMLW

Call an Expert at (888) 465-8227

Pitts Walking Floor Chip Van



Weight: 14,500 lbs. • 45' Long x 102" Wide • 120 Cubic Yards • Air Ride Suspension • Hallco Walking Floor • Grote Ultra Blue sealed wiring harness • Heavy Duty Aluminum upper and Lower Rail • Shur-Co Tarp • Stainless Steel Front & Rear • Aluminum Wheels

PTT CV

Call an Expert at (888) 465-8227

ROTOBEC Logging Grapples

Bailey's is proud to offer the Rotobec line of industrial logging grapples. Rotobec log grapples are designed for the most demanding logging applications. An interlocking head structure maximizes durability, ensuring industry-leading uptime. The integrated cylinder guards on the jaw structure provide an outstanding level of protection in all handling applications. Each model comes standard with one of Rotobec's own industry leading RT Series sealed rotators. They can be easily mounted to the HD and SHD series grapples, enhancing your efficiency. Rotobec Log Grapples are available in standard, heavy, and super heavy-duty models, depending on your working environment.

Rotobec RPA2030R Grapple with Rotator



Opening: 67-1/4" • Closing: 4-3/4" • Rotator: RGP1002 • Rotator Lifting Capacity: 100,000 lbs • Max Rotator Pressure: 5,000 PSI • Weight: 1,935 lbs.

RTC RPA2030R32

Call an Expert at (888) 465-8227

Rotobec RGP3045R Grapple with Rotator



Opening: 70" • Closing: 4-1/2" • Rotator: RGP902 • Rotator Lifting Capacity: 90,000 lbs • Swing Torque: 14,8710 lbs • Maximum Rotator Pressure: 5,000 PSI • Weight: 2,760 lbs

RTC RGP3045R43

Call an Expert at (888) 465-8227

Rotobec PC018R Grapple with Rotator



Opening: 56" • Closing: 5" • Rotator: RPG252 • Rotator Lifting Capacity: 25,000 lbs • Swing Torque: 15,720 lbs • Weight: 850 lbs

RTC PC018R

Call an Expert at (888) 465-8227

Rotobec PC025R Grapple with Rotator



Opening: 62" • Closing: 5" • Rotator: RGP252 • Rotator Lifting Capacity: 25,000 lbs • Swing Torque: 15,720 lbs • Weight: 1,015 lbs

RTCP025R RGP 252

Call an Expert at (888) 465-8227



Saw Option

Rotobec has partnered with Hultdins to offer the addition of a saw to add an element of versatility to the Rotobec Log Grapple. These amazing saws are available in .404 or .750 pitch, and can be fitted to both the Heavy Duty and the Super Heavy Duty series grapples.

Rotobec F260 Grapple with Rotator



Opening: 65" • Closing: 3-3/4" • Rotator: RT142 • Rotator Lifting Capacity: 14,000 lbs • Swing Torque: 8,450 lbs • Weight: 665 lbs • Maximum Rotator Pressure: 3,500 psi.

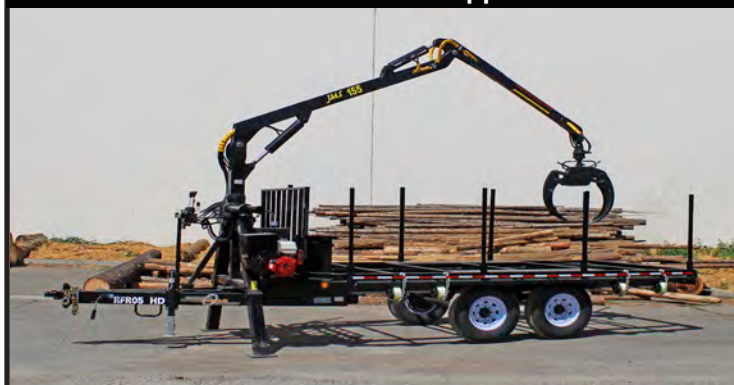
RTC F260

Call an Expert at (888) 465-8227

Hydraulic Log Loading Trailers & Skid Steer Attachments

Bailey's has been selling hydraulic log loading trailers since the late 90's. Hydraulic log loading trailers have been a big hit with small scale logging, sawmilling, and firewood processing operators. They are also popular with tree care professionals who use them to transport logs, brush, and feed chippers. Hydraulic log loading trailers allow you to transport loads quickly and easily, and access difficult areas with ease. They are available in a wide variety of sizes and styles, from small ATV tow-behind models to commercial goose-neck versions. We also sell log loading grapple units independently, for those who want to build their own trailer systems.

Hydraulic Log Loading Trailer (5 Ton) with JMS 155 Grapple



Axles: 7,000 lbs Rating • Overall Length: 24' • Overall Width: 7-1/2' • Log Bed Size: 7' x 15'-4" • Load Capacity: 13,400 lbs. • Grapple Loader: JMS 155 • Grapple Reach: 15.5' • Grapple Opening (Max): 48" • Lift Capacity: 2,600 lbs. • Hydraulic Power Unit: 13HP Honda • Weight: 4,500 lbs • Hours: New

RFR 05HD

Call an Expert at (888) 465-8227

Hydraulic Dump Trailer (7 Ton) with AM 190 Grapple



Axles: 8,000 lbs Rating • Overall Length: 23' • Overall Width: 8' • Dump Bed Size: 7' x 16' • Load Capacity: 16,000 lbs. • Grapple Loader: AM 190 • Grapple Reach: 19' • Grapple Opening (Max): 48" • Lift Capacity: 3,000 lbs. • Hydraulic Power Unit: 13HP Honda • Weight: 6,000 lbs • Hours: New

AM 716 1600

Call an Expert at (888) 465-8227

Hydraulic Dump Trailer (10 Ton) with JMS 190 Grapple



Axles: 10,000 lbs Rating • Overall length: 27' • Overall width: 9' • Dump Bed Size: 8' x 20' • Load Capacity: 20,000 lbs. • Grapple Loader: JMS 190 • Grapple Reach: 19' • Grapple Opening (Max): 48" • Lift Capacity: 3,000 lbs. • Hydraulic Power Unit: 13HP Honda • Weight: 10,000 lbs • Hours: New

AM 820 2000

Call an Expert at (888) 465-8227

AM 190 Log Grapple



AM 190 Log Grapple • Grapple Reach: 19' • Grapple Opening: 48" • Lift Capacity: 3,000 lbs. • Grapple Rotation: 360 Degrees • Weight: 1,950 lbs • Hours: New

JMS 190

Call an Expert at (888) 465-8227

Pictured With Winch



Beaver Squeezer Grapple & Winch

Beaver Squeezer grapples quickly attach to most common brand skid steers, turning them into mobile log and brush loaders. They allow you to grab logs and brush quickly and efficiently, and the 360 degree rotator makes it easy to place material in trucks and trailers. They are also a great attachment for feeding brush chippers, and many come with high powered Warn winches. Beaver Squeezer grapples are made in the U.S.A. from quality components and designed for commercial use.



Visit BaileysOnline.com to watch a Demo Video or Call an Expert at (888) 465-8227 for More Information.



62" 3 Point Tractor Grapple
 3PBSG Without Winch
 3PBSG 9 With 9,000 lb Winch
 3PBSG 12 With 12,000 lb Winch
 3PBSG 15 With 15,000 lb Winch

Warn Winch Attachment
 BSGWA 9 9,000 lb Winch
 BSGWA 12 12,000 lb Winch
 BSGWA 15 15,000 lb Winch

62" Skid Steer Grapple
 BSG Without Winch
 BSG 9 With 9,000 lb Winch
 BSG 12 With 12,000 lb Winch
 BSG 15 With 15,000 lb Winch

Pictured With Winch



KOBELCO Excavators

Bailey's is proud to offer the Kobelco excavator product line for Northern California. They have been building excavators since 1930, a testament to their quality and reliability. We offer industry-leading crawler excavators in the 3,000 lb to 185,000 lb classes including zero tail swing, compact, standard, long reach, high and wide undercarriages, mass excavation, auto recycling and demolition models. Well known as the excavator authority, Kobelco is committed to producing quality machines with advanced productivity boosting features and innovative technologies. With premier capabilities such as no time limit power boost and exclusive independent travel. They ensure superior performance and efficiency for the toughest worksite challenges.

2023 Kobelco SK55SRX Excavator with Grapple



SK55SRX-6E Excavator • Engine: 37HP Yanmar Diesel T4F • Operating Weight: 12,000 lbs • Rubber Tracks • Enclosed Cab with A/C • Standard Blade • L1 Guarding • AM Machine Grapple • Hours: New

KOB SK55RX

Call an Expert at (888) 465-8227

2022 Kobelco SK75SR Excavator



SK75SR-7 Excavator • Engine: 70HP Yanmar Diesel T4F • Operating Weight: 20,000 lbs • Triple Grousers • Enclosed Cab with A/C • Standard Blade • Bucket Not Included • Hours: New

KOB SK75SR7

Call an Expert at (888) 465-8227

2021 Kobelco SK75SR Excavator with Grapple



SK75SR-7 Excavator • Engine: 70HP Yanmar Diesel T4F • Operating Weight: 20,000 lbs • Triple Grousers • Enclosed Cab with A/C • Standard Blade • L2 Guarding • Rotobec PC025 Grapple • Hours: New

KOB SK75SR7

Call an Expert at (888) 465-8227

2022 Kobelco SK85CS Excavator with Grapple



SK-85CS-7 Excavator • Engine: 70HP Yanmar Diesel T4F • Operating Weight: 20,000 lbs • Triple Grousers • Enclosed Cab with A/C • Standard Blade • L1 Guarding • Rotobec PC018 Grapple • Hours: New

KOB SK85CS7

Call an Expert at (888) 465-8227

2023 Kobelco SK85CS Excavator with Grapple



SK-85CS-7 Excavator • Engine: 70HP Yanmar Diesel T4F • Operating Weight: 20,000 lbs • Rubber Tracks • Enclosed Cab with A/C • Standard Blade • L1 Guarding • Rotobec PC025 Grapple • Hours: New

KOB SK85CS7

Call an Expert at (888) 465-8227

2023 Kobelco SK130SRLC Excavator with Grapple



SK-130SRLC-11 Excavator • Engine: 96HP Isuzu Diesel T4F • Operating Weight: 33,000 lbs • Triple Grousers • Enclosed Cab with A/C • Standard Blade • L1 Guarding • Rotobec RPA2030 Grapple • Hours: New

KOB 130SRLC5

Call an Expert at (888) 465-8227

KOBELCO Excavators

2023 Kobelco SK140SRLC-7 Excavator with Grapple



SK-140SRLC-7 Excavator • Engine: 105HP Isuzu Diesel T4F • Operating Weight: 33,000 lbs • Steel Tracks • Enclosed Cab with A/C • Standard Blade • L2 Guarding • Rotobec RPA2030 Grapple • Hours: New

KOB 140SRLC7

Call an Expert at (888) 465-8227

2022 Kobelco SK140SRLC-7 Excavator with Grapple



SK-140SRLC-7 Excavator • Engine: 105HP Isuzu Diesel T4F • Operating Weight: 33,000 lbs • Steel Tracks • Enclosed Cab with A/C • Standard Blade • L1 Guarding • Rotobec RPA2030 Grapple • Hours: New

KOB 140SRLC7

Call an Expert at (888) 465-8227

2022 Kobelco ED160-7 Blade Runner



ED160-7 Blade Runner Excavator • Engine: 105HP Isuzu Diesel T4F • Operating Weight: 38,000 lbs • Curved Steel Tracks • Enclosed Cab with A/C • Foldable 6 Way Blade • Hours: New

KOB ED1607

Call an Expert at (888) 465-8227

2023 Kobelco SK210LC-11 Excavator



SK210LC-11 • Engine: 160HP Yanmar Diesel T4F • Operating Weight: 50,000 lbs • Triple Grousers • Enclosed Cab with A/C • Rotation Circuit • Pattern Change Controls • Hours: New

KOB SK210LC11 YN17020455

Call an Expert at (888) 465-8227

Lasco Cone Splitters allow you to break down large logs and stumps quickly and easily. They easily attach to skid steers and excavators. Lasco Cone Splitters have replaceable tips in the case of a mishap.

Lasco LASplit D3 52.40 Cone Splitter



Lasco LASplit D3 52.40 Cone Splitter • Recommended Excavator Size: 7- 19 Ton • Minimum Oil Flow: 25 GPM • Maximum Oil Flow: 55 GPM • Recommended Log Diameter: Up to 60" • Recommended Log Length: 16' • Weight: 881 lbs • Hours: New

LAS 130709

Call an Expert at (888) 465-8227

OMEF has been manufacturing tree shears in Italy for over 20 years. A popular excavator attachment for heavy land clearing jobs and make a clean, quick cut with minimum hydraulic flow requirements.

OMEF BI400 Tree Shear



OMEF BI400 Hydraulic Tree Shear • Recommended Excavator Size: 18- 24 Ton • Minimum Oil Flow: 21 GPM • Maximum Oil Flow: 40 GPM • Weight: 1,40 lbs • Maximum Cutting Diameter: 16" • Minimum Cutting Diameter: 5" Hours: New

OMF BI400

Call an Expert at (888) 465-8227

Bailey's is proud to offer the Fecon product line of forestry mulching heads and stump grinders. Fecon has been building forestry mulching heads for over 30 years. Fecon Bull Hog mulching heads are known for their productivity and durability. We now offer Fecon Stumpex stump grinder attachments for skid steers as well as the new Fecon Disc Hawk saw head attachment. Bailey's has a wide selection of Fecon mulching heads for both excavators and skid steers in stock, as well as all the replacement teeth for new and older unit Fecon heads.

Fecon FMX36 Excavator Mulcher



Excavator Class Size 5 - 10 Tons • Drum Working Width 36" • Overall Width 44" • Flow Range 12 - 40 GPM • Maximum Rotator Pressure 6,000 psi • Weight 850 lbs

FCN FMX36

Call an Expert at (888) 465-8227

Fecon CEM36 Excavator Mulcher



Excavator Class Size 8 - 15 Tons • Drum Working Width 36" • Overall Width 47" • Flow Range 17 - 40 GPM • Maximum Rotator Pressure 6,000 psi • Weight 1,450 lbs

FCN CEM36

Call an Expert at (888) 465-8227

Fecon BH80EXC Forestry Mulcher



Excavator Class Size 20 - 45 Tons • Drum Working Width 56" • Overall Width 71" • Flow Range 40 - 75 GPM • Maximum Rotator Pressure 6,000 psi • Weight 4,100 lbs

FCN BH40EXC/BH80EXC

Call an Expert at (888) 465-8227

Fecon BH74SS Skid Steer Mulcher



Skid Steer Class Size 75 - 132HP • Drum Working Width 61" • Overall Width 76" • Flow Range 30 - 50 GPM • Maximum Rotator Pressure 6,000 psi • Weight 3,000 lbs

FCN BH74SS

Call an Expert at (888) 465-8227

Fecon Teeth/Tools

Bailey's stocks a complete range of replacement Fecon mulcher teeth/tools, including Carbide, Viking Axe, Viking Sword and Cubit teeth. We also stock the Prinoth AHWI teeth for the older model Fecon forestry mulchers.



FCNP 320 15 011



FCNP BH46HDT01A



FCNP 320 14 213

Fecon SHX33SX Skid Steer Stumpex



Bit Diameter 32" • Flow Range 20 - 42 GPM • Maximum Rotator Pressure 4,250 psi • Weight 1,368 lbs

FCN STUMPEX

Call an Expert at (888) 465-8227



neuson
FOREST

Harvesters

Bailey's is proud to offer the Neuson Forest product line of tracked mechanical harvesters. They are designed for the most demanding logging and forest management applications. Neuson harvesters feature a robust, self leveling track system, designed to give you excellent performance on steep slopes. All parts and components are made from high quality American and European manufacturers, and final assembly is done in their factory in Linz, Austria. Neuson harvesters can be fitted with any number of harvester and mastication head manufacturers, including AFM and Denis-Cimaf.



Neuson self leveling harvesters can handle slopes up to 30%.



Neuson harvesters can be fitted with many of the popular harvester and mastication head brands.



Steep slope logging can be achieved mechanically with a Neuson, due to the low center of gravity.



Neuson harvesters are the perfect machine for thinning and fuel reduction projects.

2022 Neuson 204HVT Harvester



20 Ton Tracked Harvester • Engine: 219 HP Deere T4F Diesel • Maximum Slope: 30 Degrees • Swing Torque: 32,000 ft/lbs • Hydraulic Pump Capacity: 105 GPM • Gross Weight (without head): 45,600 lbs • Hours: New

NEU 204HVT

Call an Expert at (888) 465-8227

2022 Neuson 264HVT Harvester



25 Ton Tracked Harvester • Engine: 246 HP Deere T4F Diesel • Maximum Slope: 30 Degrees • Swing Torque: 47,000 ft/lbs • Hydraulic Pump Capacity: 105 GPM • Gross Weight (without head): 45,600 lbs • Hours: New

NEU 264HVT

Call an Expert at (888) 465-8227

Bailey's is proud to offer the Wravor production sawmill line to North America. Although Wravor sawmills are relatively new to North America, they have been popular in Europe for several decades. Wravor sawmills and edgers are manufactured in Slovenia, and are made of high quality European components. These sawmill systems are designed to cut tens of thousands of board feet of lumber per shift, with great accuracy and recovery. Several different sizes are available to handle logs from 8" in diameter all the way up to 78" in diameter. They also build highly productive edgers to speed up your processes. We have demonstration sawmills and edgers running in Woodland, CA for those that are interested in seeing one in person.

Wravor WRC 1250 AC Bandsaw Sawmill

The WRC 1250 AC horizontal bandsaw is part of the medium capacity sawmill line from Wravor. This sawmill runs a 6.3" bandsaw, capable of cutting logs up to a 49" diameter, but is recommended for logs 40" in diameter and smaller in high production settings. The headrig comes complete with computerized networks, along with log turning hydraulics and a board feeding conveyor. This unit is usually accompanied with a chain feed log deck and multi blade edger to boost production. Made in Slovenia.

Recommended Log Diameter Up to 40" (1,000mm)
Maximum Log Diameter 49" (1,200mm)
Recommended Log Length Up to 24 ft (8m)
Bandsaw Size 6.3" (160mm) Wide x 365" (9,040mm) Length
Bandsaw Teeth Stellite with 0.11" (2.8mm) Kerf
Bandsaw Wheel Size 5.3" (135mm) Wide x 49" (1,250mm) Diameter
Standard Main Motor Size 74hp (55 kW)
Electrical Supply Main 3-Phase 460V, 100 Amps, Electronics 1-Phase 220V, 60 Hz
Typical Cutting Production Up to 23,000 Board Feet (55 Cubic Meters) of 4/4 per 8 hour shift
Item # WRC 1250 AC



Wravor Multiple Blade 6" Board Edger



The model 750-20-160 board edger is a medium sized edger made by Wravor. This edger is capable of ripping up to 6.3" thick lumber, and comes with one fixed blade and up to 4 moveable blades. You can also stack 4 other fixed blades on the arbor. Accessories such as computer networks, laser guides, sawdust conveyor and board brushes can greatly improve production and clean-up. Demonstration unit, complete with 3 blade edger is located in Woodland, CA.

Maximum Lumber Thickness 6.3" (160mm)
Minimum Lumber Thickness 3/4" (20mm)
Maximum Lumber Width 35.4-49" (900-1,250mm)
Circular Saw Size 19.7" (500mm) Wide x 3.5" (90mm) Arbor
Circular Saw Teeth Carbide with 0.16" (4.0mm) Kerf
Standard Main Motor Size 60 hp (45 kW)
Electrical Supply Main 3-Phase 460V, 60 Amps, Electronics 1-Phase 220V, 60 Hz
Item # WBE 750 20 160

Bailey's is proud to offer the WTM Vaglio dry kiln and lumber treating line to North America. Although Vaglio dry kilns and lumber impregnators are relatively new to North America, they have been popular in Europe since they started back in 1972. These are manufactured in Italy, and are made of high quality European components. Vaglio dry kilns use vacuum technology to dry high quality lumber and slabs quickly and efficiently. They also use vacuum technology on their impregnation systems. We have a demonstration dry kiln running in Woodland, CA. for those that are interested in seeing one in person.

Vaglio ESP Wide Vacuum Dry Kiln



The ESP Wide is a continuous vacuum dry kiln that uses special heating plates to dry wood. This is the fastest and most cost effective way to dry high quality woods. The ESP Wide is designed to dry both lumber and live edge slabs. This kiln can handle slabs up to 76" wide and 16' long, making this the kiln of choice for large live edge slabs. The autoclave is made from grade 420 stainless steel, for long life and corrosion resistance. Special heating plates are made from corrosion resistant aluminum and stainless steel. The ESP Wide comes with a powerful 10kW vacuum pump, which is cooled with a large auxiliary water tank to keep energy costs to a minimum.

Kiln Specifications

Autoclave Outside Height 98" (2485mm)
 Autoclave Outside Width 80" (2030mm)
 Autoclave Outside Length 18' (5.8m)
 Autoclave Approximate Weight 11,000 lbs (5,000 kg)
 Lumber Unit Maximum Height 39" (1000mm)
 Lumber Unit Maximum Width 76" (1900mm)
 Lumber Unit Maximum Length 16.4' (5m)
 Maximum Lumber Volume 3,400 Board Feet (8 Cubic Meters)
 Electrical Requirements 440V 3-Phase 100 Amps (75kW)
 Item # WTM KILN 18160



Vaglio APV Vacuum Lumber Impregnator



APM vacuum lumber impregnators allow you to pressure treat lumber with preservatives for outdoor use. This system uses the effect of pressure and vacuum in a chamber to penetrate deeply into the wood cell structure. This process, known as the Bethell or full cell process, creates wood products that are protected from decay caused by fungi and insects. Vaglio APV vacuum lumber impregnators are fully automated, which allows you to control all stages of treatment. Excess preservative solution is removed from the surface of the lumber in the final drying stage, saving on costs.



Visit baileysonline.com to
Watch a Demo Video or
Call an Expert at (888) 465-8227
for More Information.



- **Model 6-16** Ideal for smaller saw milling operations.

LM M6 16 Max Single Pass: up to 6.25" x 6.25"
Max Double Pass: up to 6.25" x 12.5"

- **Model 6-18** Ideal for medium sized operations.

LM M6 18 Max Single Pass: up to 6.25" x 6.25"
Max Double Pass: up to 6.25" x 12.5"

- **Model 7-23** An affordable option with more than sufficient cutting capacity.

LM M7 23 Max Single Pass: up to 7-7/8" x 7-7/8"
Max. double pass: up to 7-7/8" x 15-7/8"

- **Model 8-30 EFI** This powerful mill is currently the most popular choice.

LM M8 EFI Max. single pass: up to 8.5" x 8.5"
Max. double pass: up to 8.5" x 17"

- **Model 10-30 EFI** Recommended for operations that plan to mill large dimension boards on a regular basis.

LM M10 EFI Max. single pass: up to 10" x 10"
Max. double pass: up to 10" x 20"



Bailey's also has a large selection of
Lucas Mill parts and accessories.
Call an Expert at (888) 465-8227

Lucas Mill portable sawmills have been a big hit here in North America since their introduction back in 1996. Today there are well over 15,000 Lucas Sawmills operating worldwide, with a great many of those still cutting logs today. These portable sawmills are designed for production milling of saw logs, both large and small, on a commercial scale. They are available in both circular swing blade or slabber versions. The swing blade models break down logs into accurate lumber, which is far quicker and easier than comparably priced bandsaw sawmills. They are also much cheaper to operate, as the carbide tipped saw blades don't require the constant maintenance that bandsaw blades need. The Lucas Mill slabbers are designed to cut large logs into slabs and tabletops for specialty woodworking projects.



Shown is Charly Pottorff, owner and founder of Wildcat Tree Service. Charly has been running Lucas Sawmills in the Manhattan, Kansas area for 2 decades, making high grade lumber and slabs from local trees that are destined for firewood or landfill material. Much of his lumber ends up as high grade doors, mantles, and tables. His latest project is a custom workout room, complete with walnut floors. To see more about Charly Pottorff and Wildcat Tree Service, visit www.wildcattree.com

Images provided by photosbyrh.com

Lucas Mill dedicated slabbing sawmills (also known as dedicated slabbers) are specifically designed for cutting large wood slabs. Dedicated slabbers use the patented Lucas Mill frame system to make setup and operation productive and simple. These machines create large, natural edge slabs from logs, stumps, burls, and root balls with accurate results. Dedicated slabbers use specially designed ripping chainsaw chain to cut smoothly and accurately through the largest and toughest of woods.



- **Model DSM 23** Dedicated Slabber specifically designed for cutting large timber slabs.

DSM 23 15	60" Wide Max Cut / 19.7" Depth Cut / up to 20' Max Length
DSM 23 19	76" Wide Max Cut / 19.7" Depth Cut / up to 20' Max Length
DSM 23 27	108" Wide Max Cut / 10.5" Depth Cut / up to 20' Max Length

- Dedicated Slabber Trolley only. Designed to fit on an existing Lucas Mill frame system. (Excluding Model 4)

DST 23 15	60" Wide Max Cut / 19.7" Depth Cut
DST 23 19	76" Wide Max Cut / 19.7" Depth Cut



Financing Options Available!
Call or See Our Website for Details!

We Have a Lucas Mill Slabbing Solution to Meet Your Needs

- We offer Slabbing attachments that will convert your current Lucas Mill into a Slabbing MACHINE producing slabs up to 60" wide!
- Dedicated SUPER SLABBERS that will mill slabs up to 9 FEET WIDE!
- Slabs fetch large dollars — Increase your business and your bottom line — Get started slabbing today!

Call a Lucas Mill Specialist Toll-Free at (888) 465-8227 or visit our website at baileysonline.com



Logosol F2 Portable Chainsaw Mill

The Logosol F2 portable sawmill is highly mobile, fun, easy to operate, and makes perfect lumber from small and medium sized logs. These sawmills use a high horsepower chainsaw (90cc or larger) to break down logs quickly and accurately. The specialized ripping chain makes a surprisingly smooth surface, unlike standard saw chain. These highly portable milling systems are designed to go anywhere you can carry them to, whether it be your back yard, or the middle of the forest. Unlike most chainsaw mills, it allows you to cut lumber in a comfortable standing position, with little effort as compared to other mills.

Features

- Minimal setup time
- Easily dismantles for transport and storage
- Convenient carrying handle
- Lightweight saw carriage is prepared for both crank handle and bar nose steering
- Log lifters and log bed can withstand up to one metric ton
- Adjustable sawmill feet included for steady positioning

13FT (4 Meter)	LSL 4525 000 2002 LSL 4525 000 2010	Portable Chainsaw Mill Complete Kit (w/Husqvarna 390XP)
16FT (5 Meter)	LSL 4525 000 2005 LSL 4525 000 2015	Portable Chainsaw Mill Complete Kit (w/Husqvarna 390XP)
19FT (6 Meter)	LSL 4525 000 2006 LSL 4525 000 2016	Portable Chainsaw Mill Complete Kit (w/Husqvarna 390XP)



Convenient lifting winches with log beds, which together can stand the load of one ton!

Made of a light and strong aluminum alloy.

Durable and dirt repellent. Never rusts.

Visit baileysonline.com or Call an Expert at (888) 465-8227 for Pricing and More Information.



Logosol F2+ Portable Chainsaw Mill

The Logosol F2+ Portable Chainsaw Mill meets the demands of customers who want an extra-robust sawmill for sawing larger logs. All essential parts of the sawmill are oversized to stand up to the stress of heavy logs and the log beds have been extended by 7". An exclusive feature to the F2+ is the ability to detach the log lifters while keeping the guide rail intact and perfectly aligned. It has never been easier to store, transport, and set up a heavy-duty sawmill for oversized logs.

13FT (4 Meter)	LSL 4525 000 2020 LSL 4525 000 2022	Portable Chainsaw Mill Complete Kit (w/Husqvarna 390XP)
16FT (5 Meter)	LSL 4525 000 2050 LSL 4525 000 2051	Portable Chainsaw Mill Complete Kit (w/Husqvarna 390XP)
19FT (6 Meter)	LSL 4525 000 2060 LSL 4525 000 2061	Portable Chainsaw Mill Complete Kit (w/Husqvarna 390XP)



Cuts logs up to 24" in diameter!



Log Handling Tools



The Original Aluminum Handled Logging & Woodworking Tools



A) LogRite 30" Aluminum Handle Hooker

Great for pulling slabs off the sawmill or moving firewood. The hook is made from heat treated, zinc plated steel. It has a textured rubber handle for better grip.

Item #

HR 030 LogRite 30" Hooker

HR 036 LogRite 36" Hooker

B) LogRite Aluminum Handle Peavey

Built to handle the larger logs on your landing. The aluminum handles are stronger than traditional wood handles. Textured rubber grip. We now also offer a 42" version and "Xtreme" 60" peavey with heavy-duty handle. NOTE: Lifetime warranty on the Peavey handle.

Item #

PV 042 LogRite 42" Peavey

PV 048 LogRite 48" Peavey

PV 060 LogRite 60" Peavey

XPV 060 LogRite 60" "Xtreme" Peavey

C) LogRite Aluminum Handle Cant Hooks

These cant hooks are great for handling logs and cants or beams. The bright blue handle is easy to see around a sawmill or woodlot. The heat treated, zinc plated hook is built to last. Textured rubber grip. The "Xtreme" 60" Cant Hook has a heavy-duty handle.

NOTE: Lifetime warranty on the Cant Hook handles.

Item #

CH 042 LogRite 42" Cant Hook

CH 048 LogRite 48" Cant Hook

CH 060 LogRite 60" Cant Hook

XCH 060 LogRite 60" "Xtreme" Cant Hook

MH 078 LogRite 78" Cant Hook

D) LogRite Log Stand

Turn your cant hook into a timberjack! The 6" universal log stand attaches to any LogRite cant hook or peavey.

Item #

ULS 006 LogRite Log Stand



Lewis Winch Portable Chainsaw Winch

Turn your chainsaw into a portable winch. Simply take off your bar and chain and attach the Lewis Winch and you have an incredibly powerful pulling unit. The Lewis Winch is handy for winching small logs for firewood, pulling game animals from remote locations, slash clearing, even pulling a car out of a ditch! There are hundreds of uses. The Lewis Winch 400 MK2 fits most chainsaws. You should have a 3 cubic inch (50cc) saw or more to get maximum use of your Lewis Winch. It will pull up to 4,000 lbs with a larger saw (5 cubic inch / 85cc) and the line speed is approximately 60' per minute. Comes complete with 150' of 3/16" cable with hook. Anchor chain and saw not included.

Item # LW 400MK2

Bailey's End Sealant (5-Gallon)

We've been testing different types of end-sealer for logs and lumber and we've come up with a great product. It's a clear, wax based liquid dries clear and works great to limit checking of wood. Bailey's Seal should be applied heavy enough so it almost drips - to green logs and lumber, and if you're sealing large cants or logs (20" in diameter or bigger), coat these twice, allowing about twenty minutes between applications. Do not freeze. Bailey's Seal will greatly limit checking, but it should be applied as soon as possible after cutting or end trimming. By using Bailey's Seal you can save the value of your wood.

Item # 60455



Rens P4000 Metal Detector

This portable metal detector is lightweight, sturdy, reliable and specifically designed to help you locate metal in logs or standing timber. Unlike standard metal detectors, it allows you to pinpoint metal locations down to a narrow band along the log.

Item # 60705



Bailey's is proud to offer the Dyna product line of firewood processors and wood splitters. Dyna has been building firewood processing machinery in Michigan since 2007. Dyna processors are known for their simplicity and durability. Bailey's has a nice selection of firewood processors and wood splitters at our Woodland facility, as well as a rental option for temporary users.

Dyna SC-14 Firewood Processor



Preferred Log Diameter: 14" and Smaller (Maximum 18"/Minimum 3") • Preferred Log Length: 15' and Shorter • Maximum Firewood Length: Up to 22" • Splitting Time Cycle: 7 Seconds • Hydraulic Deck • Engine: 38HP Kohler Gas • Hydraulic Flow: 30 GPM • Overall Weight (GVWR): 5,380 • Hours: 50

DNA SC14

Call an Expert at **(888) 465-8227**

Dyna SC-15 Firewood Processor



Preferred Log Diameter: 16" and Smaller (Maximum 22"/Minimum 3") • Preferred Log Length: 22' and Shorter • Maximum Firewood Length: Up to 24" • Splitting Time Cycle: 6 Seconds • Hydraulic Deck • Engine: 49HP C2.2 Cat Diesel (No Def) • Hydraulic Flow: 30 GPM • Overall Weight (GVWR): 9,600 • Hours: New

DNA SC15

Call an Expert at **(888) 465-8227**

Dyna LS24-18 Log Splitter



Preferred Log Diameter: 20" and Smaller • Maximum Firewood Length: Up to 24" • 2 & 4 Way Splitting Blade • Splitting Time Cycle: 10 Seconds • Manual Log Lift • Engine: 9HP Honda • Overall Weight (GVWR): 1,200 • Hours: New

DNA LS24 18

Call an Expert at **(888) 465-8227**

Dyna SC-16 Firewood Processor



Preferred Log Diameter: 16" and Smaller (Maximum 22"/Minimum 3") • Preferred Log Length: 22' and Shorter • Maximum Firewood Length: Up to 26" • Splitting Time Cycle: 6 Seconds • Hydraulic Deck • Engine: 49HP C2.2 Cat Diesel (No Def) • Hydraulic Flow: 30 GPM • Overall Weight (GVWR): 9,760 • Hours: New

DNA SC16

Call an Expert at **(888) 465-8227**

Bailey's Custom Rope Splicing

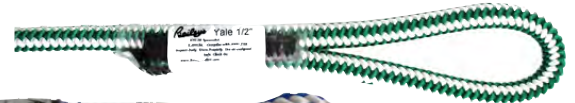


Custom Splicing at Bailey's

Bailey's has a fully operational rigging and rope splicing shop in our Woodland, California warehouse. We hand splice and sew all kinds of synthetic rope from basic 3-strand to complicated double braids. Our splicing technicians are certified by the top rope manufacturers, including Samson, Teufelberger and Yale, and all Bailey's products are extensively tested by an outside third party. We also offer sewn eye splices from our industrial sewing machines. Sewn eye splices are usually more economical than hand splices, and can be done quickly if you are in a rush. We do custom work all the time, so don't be afraid to call and ask for a rope splicing technician.

Below is a list of our custom splicing options. Most climbing and rigging ropes are available with standard tight eye splices, but you can add custom splices to many of our ropes by calling a sales representative. Below is a list of our most common rope splice request. All splices are labeled with an ANSI information tag. Bailey's will only splice new (unused) arborist ropes.

Item #	Description
A) SPL 46592	Sewn Splice Tight Eye (12-Strand Solid Braid)
SPL 46593	Sewn Splice Tight Eye (16-Strand)
SPL 46594	Sewn Splice Tight Eye (24-Strand/Kernmantle)
B) SPL 46587	Sewn Splice Large Eye (12-Strand Solid Braid)
SPL 46588	Sewn Splice Large Eye (16-Strand)
SPL 46589	Sewn Splice Large Eye (24-Strand/Kernmantle)
C) SPL 46595	Hand Spliced Tight Eye (16-Strand)
SPL 46596	Hand Spliced Tight Eye (24-Strand)
D) SPL 46590	Hand Spliced Rigging Eye (12-Strand Hollow Braid)
SPL 46591	Hand Spliced Rigging Termination (12-Strand Hollow Braid)
E) SPL 46597	Hand Spliced Rigging Eye (Double Braid)
SPL 46598	Hand Spliced Rigging Termination (Double Braid)



There's never been a better time to buy!



We Have the Equipment You Need for Summer Success!

Deduct the **FULL PURCHASE PRICE** of financed equipment - this year, the amount has been doubled to \$1,000,000

Take advantage of the Section 179 deduction. All Morbark / Rayco chippers, stump grinders, and Boxers are eligible for this special deduction. Call your Morbark / Rayco specialist to find the perfect equipment option and financing plan for your business. Make sure you don't miss this exciting savings opportunity by calling today!

Jim Haas
Morbark Sales Director

(888) 465-8227 Ext 227
Mobile (530) 908-2466
jhaas@baileysonline.com





1222 Commerce Ave., Suite D
Woodland, CA 95776

PRSRT STD
U.S. POSTAGE
PAID
BAILEYS INC.

Bailey's Industrial Division

WOODLANDPRO **KOBELCO**

MORBARK **RAYCO**

ROTOBEC **LUCAS MILL**
TOUGH HANDLING EQUIPMENT THE ULTIMATE PORTABLE SAWMILL!

BOXER **LOGOSOL**
BIG POWER IN ALL PLACES

WRAVOR **AFMFOREST**

WTM VAGLIO **PITTS Trailers**
WOOD TREATMENT MACHINES Since 1976

FECON **DYNA PRODUCTS**

neuson FOREST **XL SPECIALIZED TRAILERS** **KIOTI**

Printed in the U.S.A.

© 2022 Bailey's — Forestry | Woodcutting | Tree Care | Landscaping | Outdoor Power Equipment

Call Our Industrial Machinery Professionals at **(888) 465-8227**



Dedicated Slabbers



See page 19 for more details.

ANAB Automated Water Cooled Chain Grinder



ANAB water cooled sharpeners are the finest production saw chain sharpeners made today. The ANAB X3 is a fully automatic sharpening machine designed for all standard chainsaw and harvester saw chains up to .404" pitch. These sharpeners use ANAB's exclusive water cooled system when grinding, which means the chain cutter retains its sharpness for up to 50% longer while cutting compared to traditional dry grinding. For more information, call and ask for an expert.